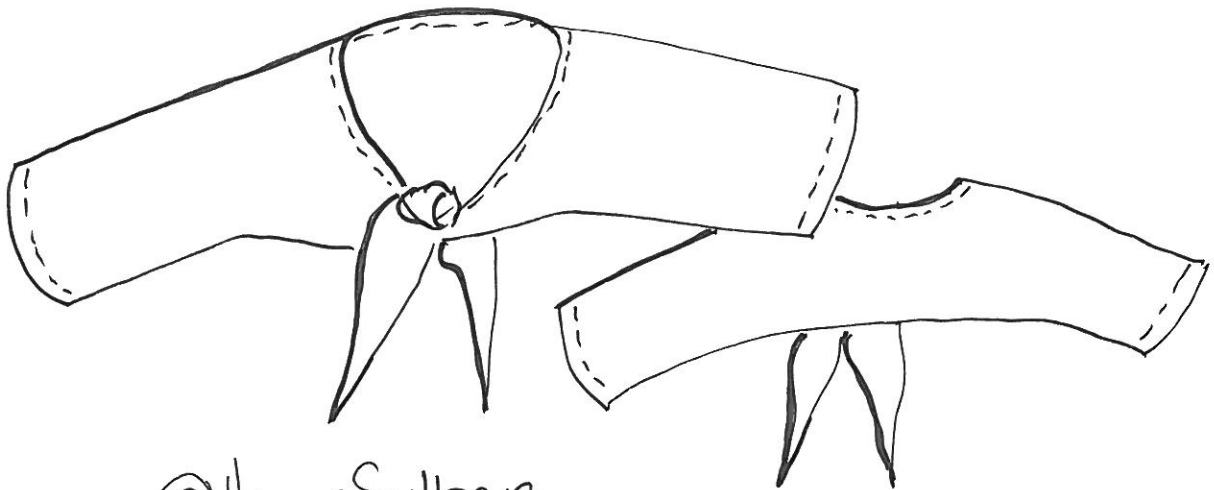
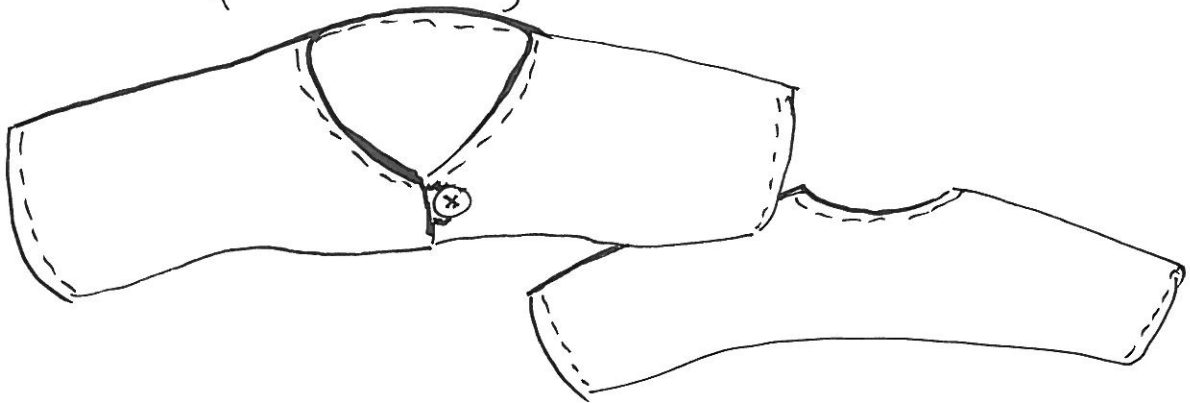


BAMSE - BUILD A BEAR

SPÆLEVARMER ELLER
KORT TRØJE



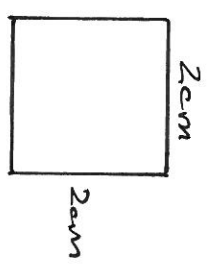
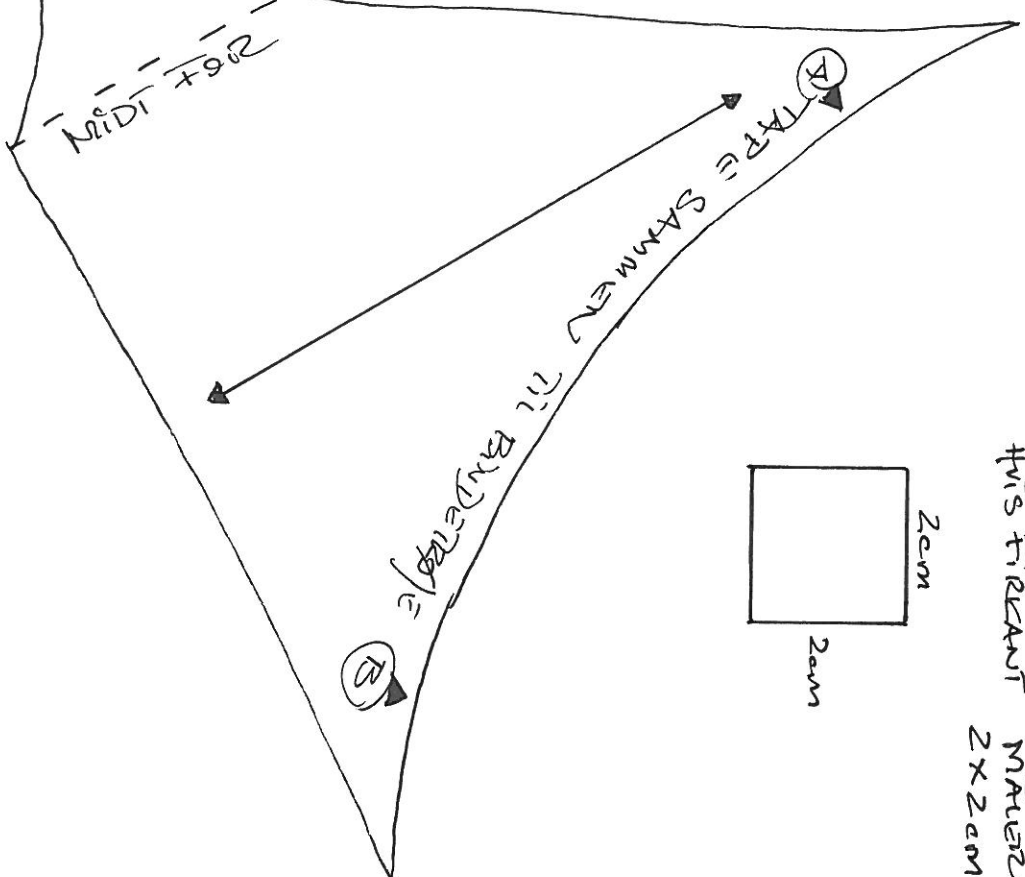
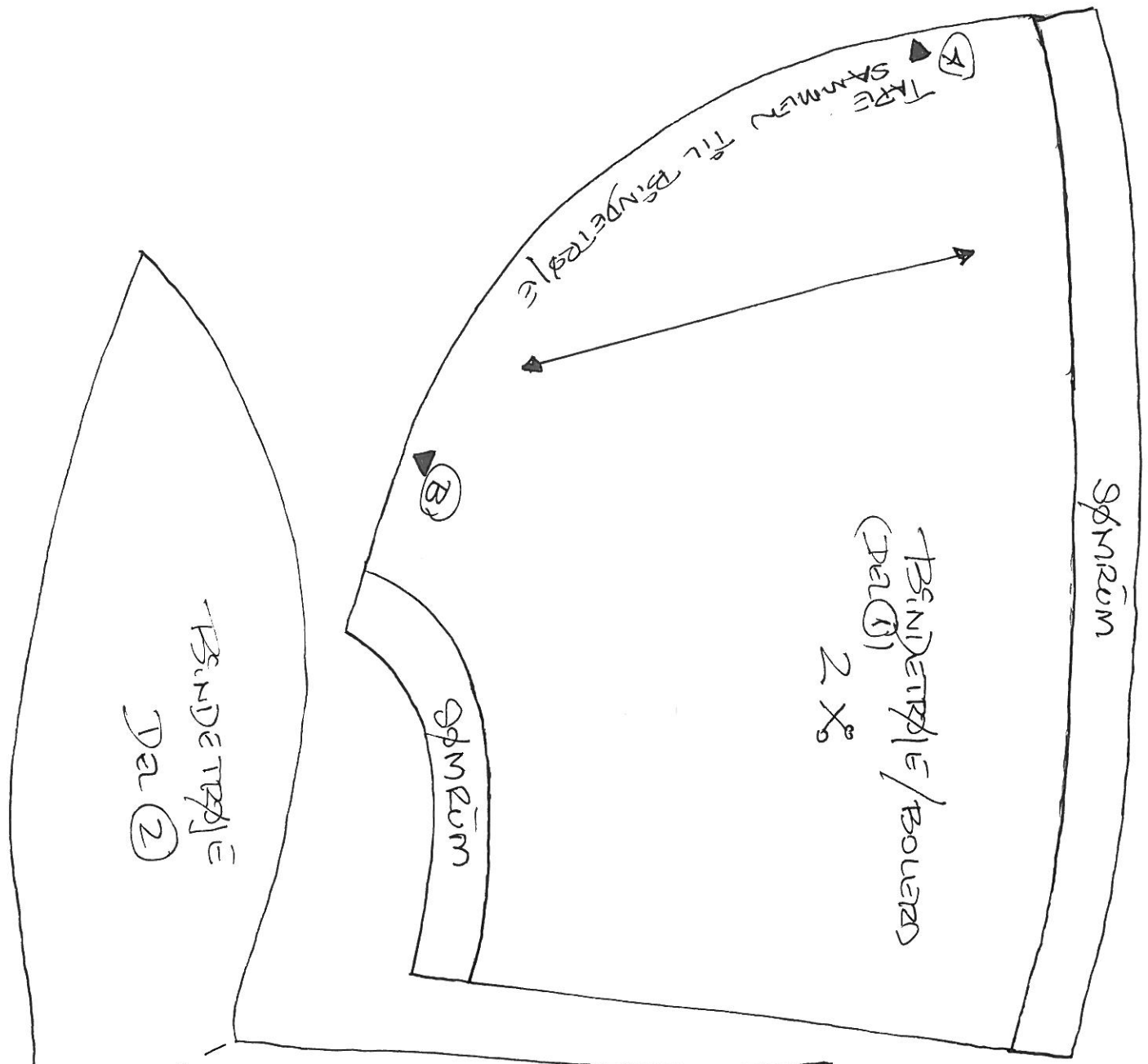
@Hanne Solberg



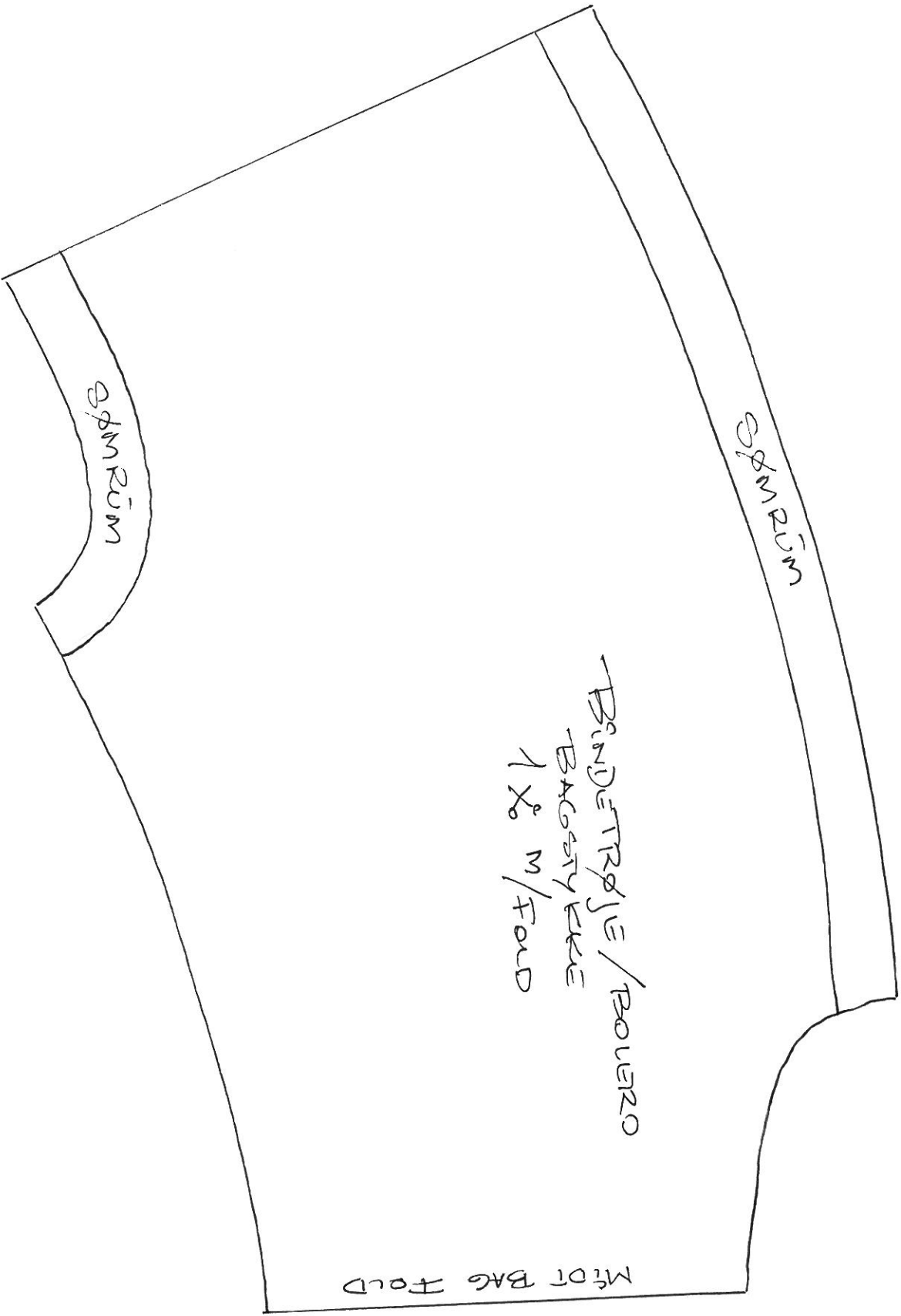
Klip mønstret uden "snipper" til
kort trøje.

Sy trense der passer til den knap du
vælger til lukning.

VARIANT: Sy stretch strikband rundt
kanterne



BUNNER KONTROL
 STYRREASE KORREKT
 HUS FIRSANT MÅTTER
 2x2cm



SPINRUM

SPINRUM

BANDSTRØJE / BOUZRO
BAGSTRØJE
1 X M / FOLD

MIDT BAG FOLD